

A plea from Asian Elephant Support!

We send this plea to ask for help with flood relief for the Royal Elephant Kraal in Ayutthaya, Thailand.

We visited the Kraal in 2008 and were deeply moved by their dedication to elephant welfare and the role of the mahout in the future of this magnificent animal. We have been following the flood, and we want to alert our supporters of their current emergency and needs.

Flooding meant evacuation for both people and elephants. The mothers and babies are in the historic Kraal. Some of the dangerous elephants are up near the Kraal. Other elephants are about a mile down the road, where they went in 2006. The road to that place is half closed as well due to flooding. The people who live and work with the elephants have moved to wherever they need to be to provide care. The cost for recovery will be high and the work will be hard. On top of the damage from floodwaters, they have had to turn away many visitors, over 500,000 baht, so it has been devastating on all fronts.



*Elephantstay team hut*



*Field where the elephants used to sleep*

To see more photos of the flood, go to <http://www.elephantstay.com/elephantstayflooded.html>.

Please help in any way you can. Any amount large or small **will** help and is greatly appreciated.

**To donate:**

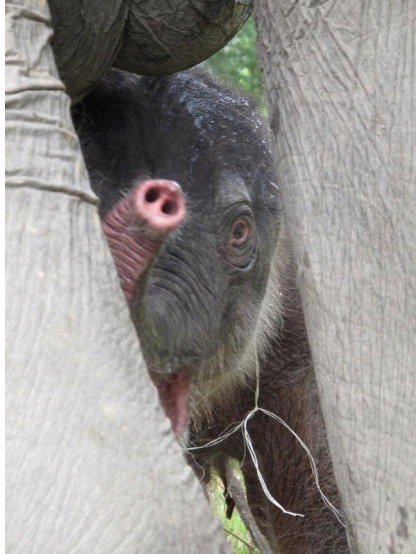
Go to <http://www.elephantstay.com/> and click **Donate**

or

**Donate** to Asian Elephant Support and send a follow-up email to tell us it is for Elephantstay.

***(Enjoy the story of their new calf on the next page)  
Sai Chon, born Nov 3, 2010***

In the midst of this disaster was a reason for celebration. To the delight of many, a baby girl named Sai Chon was born to Pang Pootson. Fortunately, she is health and strong. Because the temporary field was not an ideal place for a baby, Sai Chon and her mom had to walk back to the historic Kraal where the other moms and babies were staying. The road was closed due to flooding, so they had to walk on their own, but with quite an entourage of mahouts and admirers who stopped often to make sure Sai Chon and mom got enough rest.



*Baby Sai Chon*



*Sai Chon is blessed*



*Snacking on the way*



*Pang Pootson and Sai Chon arrive at the historic Kraal*

To see more photos of Sai Chon and other babies, go to <http://www.elephantstay.com/Elephant-Nursery-2010.html>.

Again, we urge you to support the recovery efforts at the Kraal. They won't know the extent of the damage until the water recedes, but it is clear it will be great.

**To donate:**

Go to <http://www.elephantstay.com/> and click **Donate**

or

**[Donate](#) to Asian Elephant Support and send a follow-up email to tell us it is for Elephantstay.**

***Thank you for your Support!***

**ASIAN ELEPHANT SUPPORT**

[www.asianelephantsupport.org](http://www.asianelephantsupport.org)

4764 Brookton Way, St. Louis, MO 63128 USA

*Asian Elephant Support is a U.S. 501(c)(3) organization; donations are tax-deductible.*